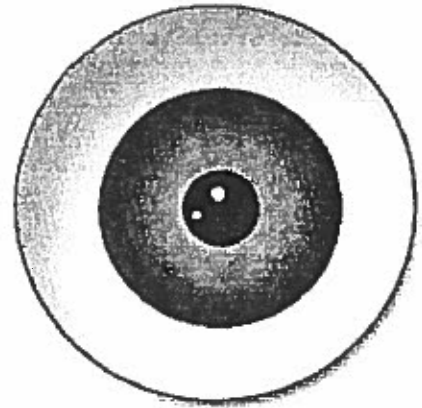


Name _____

Date _____

Page _____



Eye Dissection

Objective: _____

Direction for the dissection are on the laminated sheets: **Follow them closely.**

Remember this was once a living thing

1) What parts of the eye did you identify?

- a) _____
- b) _____
- c) _____
- d) _____
- e) _____
- f) _____
- g) _____

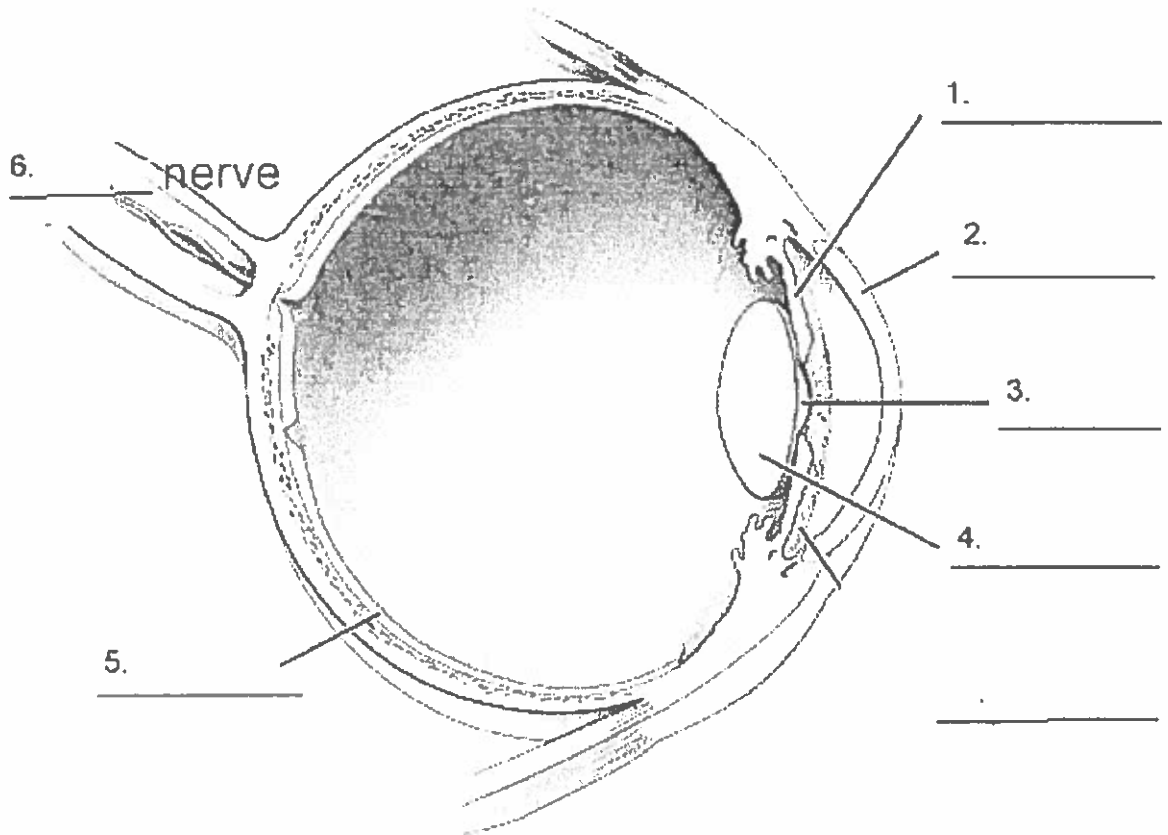
2) Match the parts of the eye to their function: (sclera, pupil, iris, retina, lens, optic nerve and tapetum.)

- a) _____ This is the tough outer section of the eye
- b) _____ The colored portion of the eye
- c) _____ Changes shape to focus light on the retina
- d) _____ Opening in the iris that light goes through
- e) _____ Iridescent and found in nocturnal animals
- f) _____ Carries messages to the brain
- g) _____ Where light is focused at the back of the Eye

3) What did the lens look like? _____

4) What was the structure at the back of the eye that slid off when you touched it?
(Hint multi colored)

5) Label the parts of the eye.



6) What surprised you the most about the eye during the dissection?