



Where's you Get Those Peepers

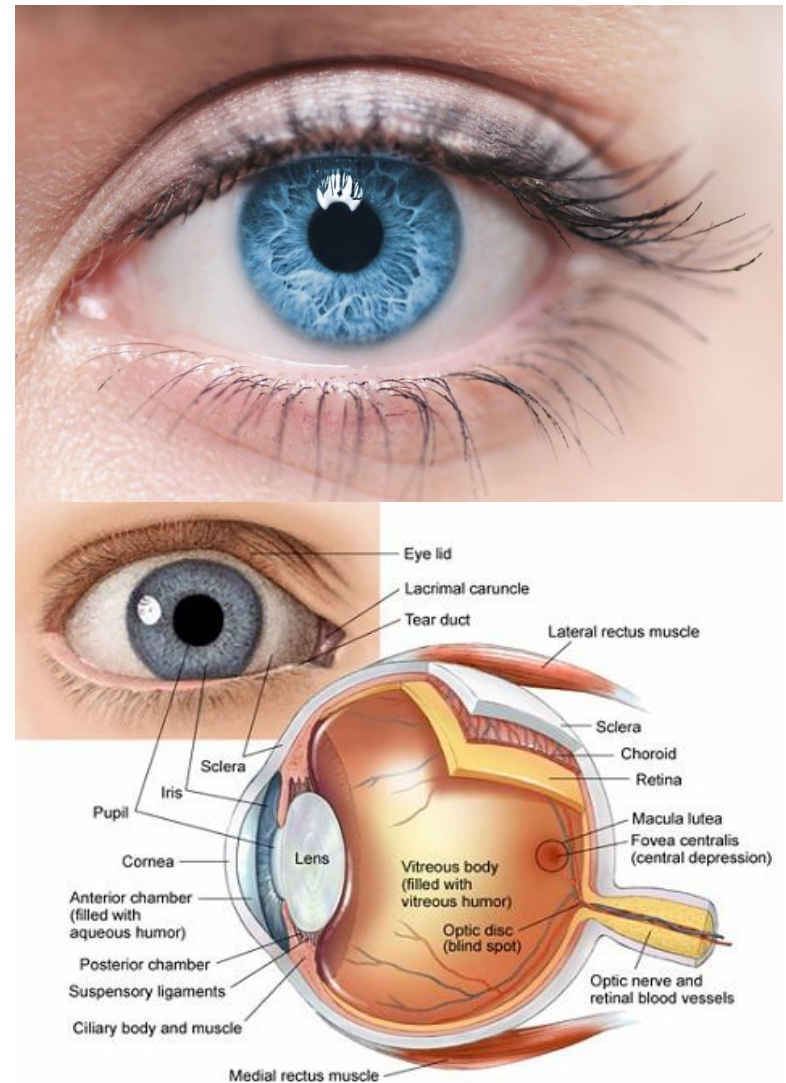
Eyes and Ears

Objective

- To understand the parts of the eye and how the eye works.

Research

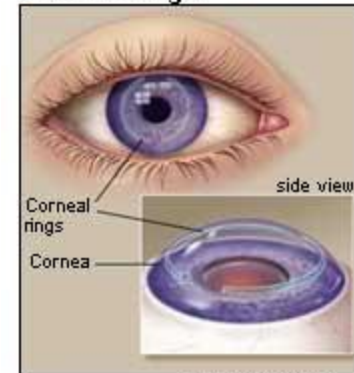
- **Eyes** – most important of all your sense organs. You get most of your information about the world through your eyes.



Research

- **Cornea** – the clear outer area of the eye.
- **Iris** – the colored portion of your eye. Consists of 2 sets of circular muscles that control the size of the pupil.

Corneal Rings



© 2003 WebMD Inc.



© Doron Mironovyan

Research

- **Pupil** – the opening in the eye through which light enters, The black area in the center of the iris.
- **Dilate** – when the pupil grows larger
- **Constrict** – when the pupil grows smaller

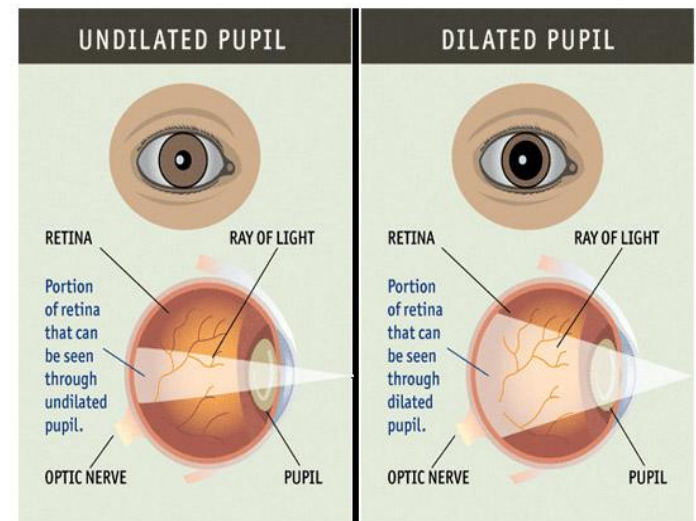
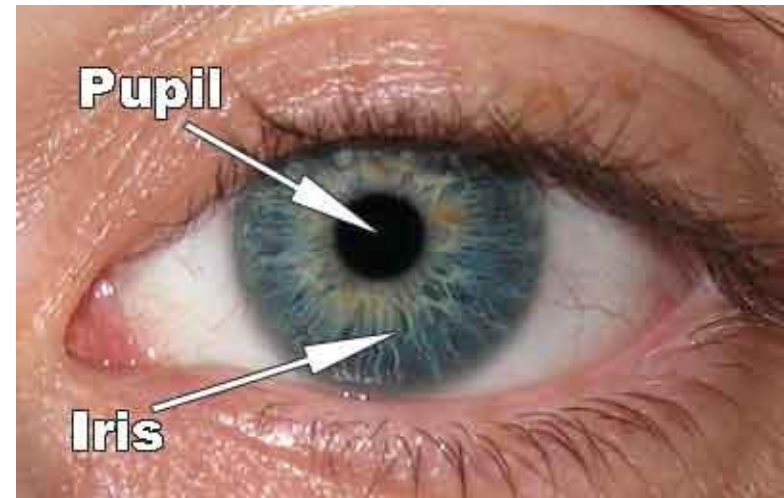
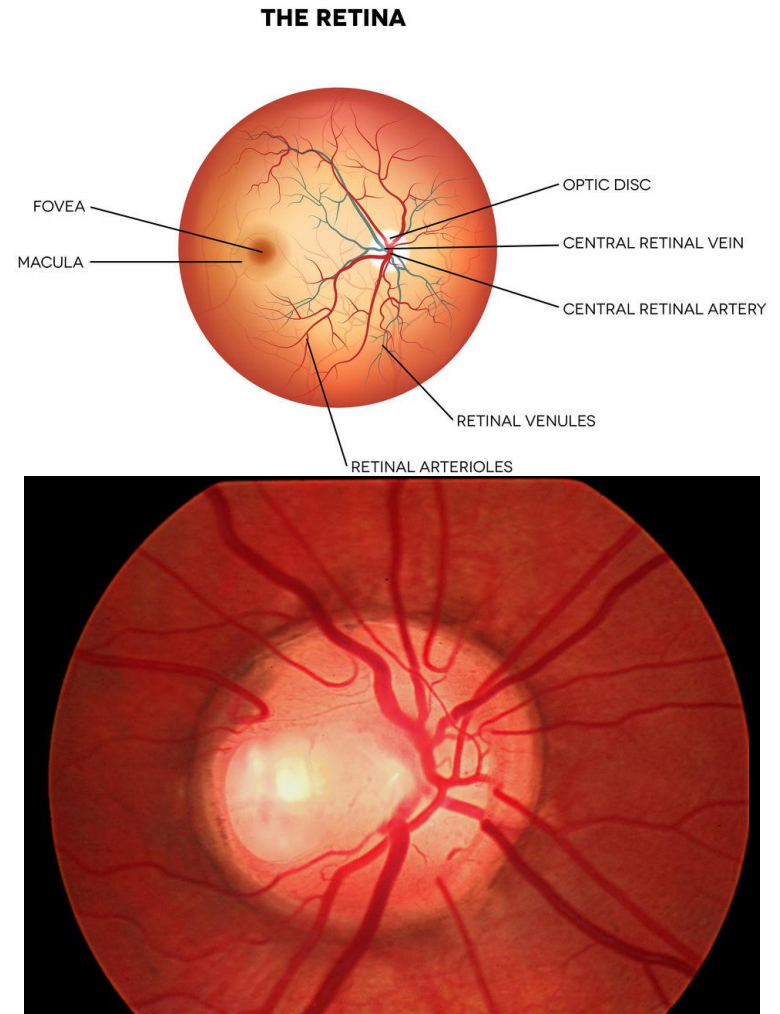


Photo adapted from www.nei.nih.gov web site

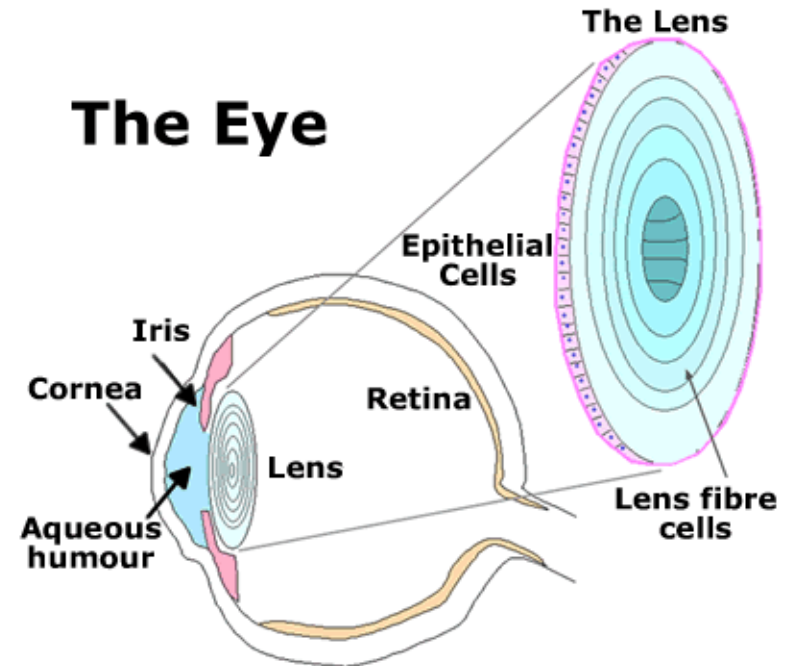
Research

- **Retina** – a sheet of light sensitive nerves that line the back of the eye.
- **Optic Nerve** – nerve that carries impulses from the retina to the brain, allowing “sight”.

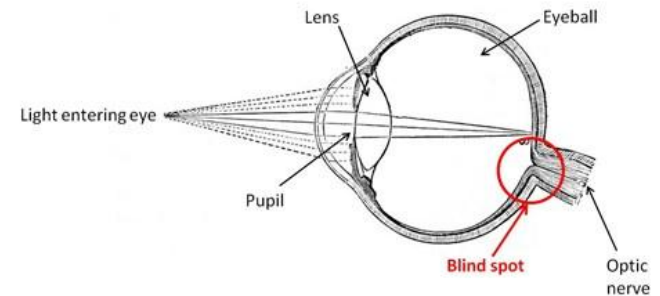


Research

- **Lens** – bends the light that enters the eye to focus it on the retina.
- **Blind Spot** – The part of the retina where the optic nerve attaches, there are no rods or cones located here, if light is focused on this area, you cannot see the image.



A diagram of the human eye



Parts of the Eye

